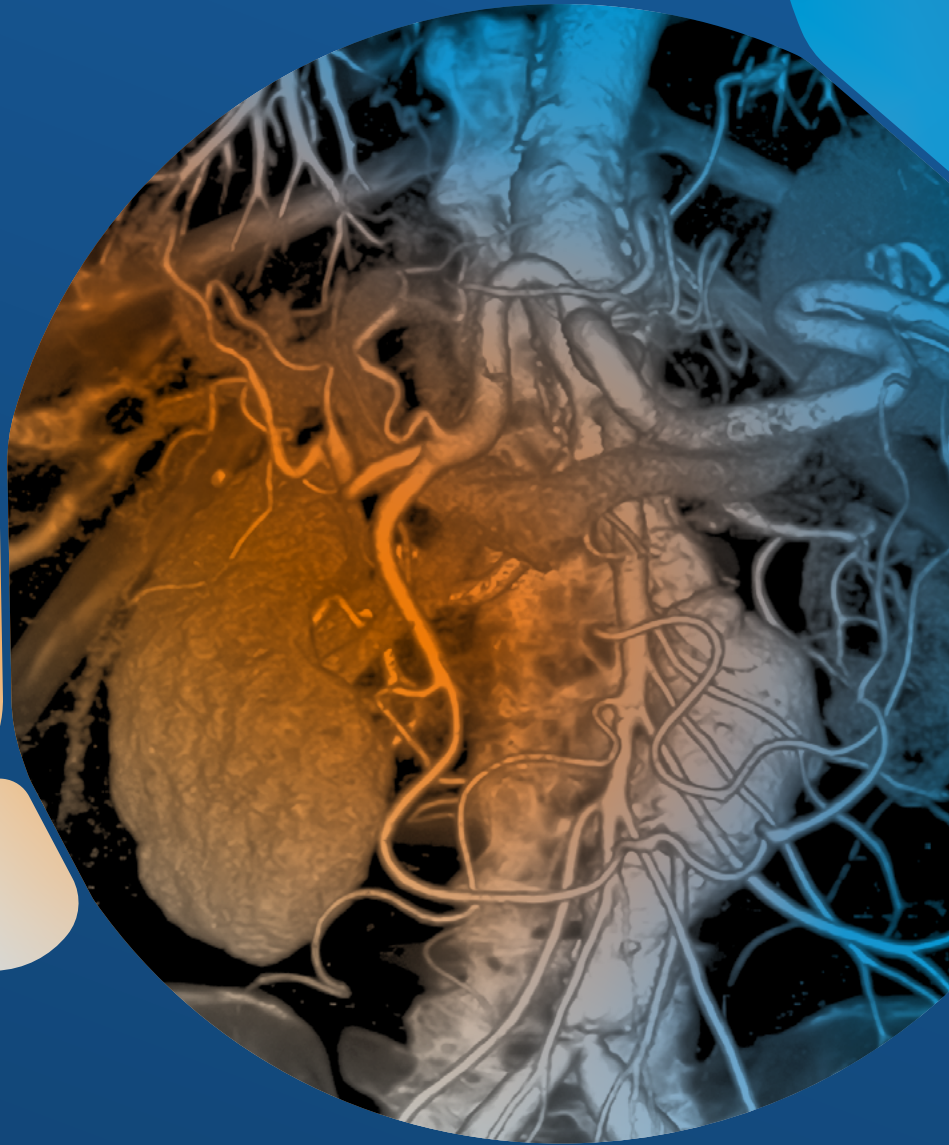


SECTRA



THE RADIOLOGIST GUIDE

Choosing the right application
for clinical productivity



Over **30 years** of experience

Our knowledge is based on years of experience in the PACS industry and continuous market analysis, customer conversations and web surveys. We have gathered valuable insights about what's possible with a state-of-the-art, unified solution and let you in on the potential of merging today's technology with smart application design. And above all, how this approach differs from traditional, fragmented systems.

Start reimagining your workflow today, because the future of radiology isn't just bright — it's brilliant.



The landscape of **radiology** is evolving, and with it, the definition of **excellence**. Brilliant workflows aren't just theoretical constructs, they're tangible solutions ready to transform your practice today.

From smart worklists to **AI integration**, each component plays a crucial role in elevating radiology to new heights of efficiency and accuracy. When artfully combined, these elements **create a workflow** that's greater than the sum of its parts—it's not just about working faster, but smarter, with greater precision and insight for **better and safer patient care**.

By delving into how one application can create brilliant workflows, we aim to show how radiology departments can meet their current challenges and thrive in an increasingly complex healthcare landscape.

Challenges facing **radiology** today

We know that in the high-stakes world of diagnostic imaging, radiologists all over the world face daily struggles that impact both productivity and patient care. Challenges such as aging population, high burnout rates, increasing volumes, and resource constraints need to be addressed to create not only a manageable, but a more sustainable work environment.

RESOURCE CONSTRAINTS

INCREASING VOLUMES

HIGH BURNOUT RATES

AGING POPULATION

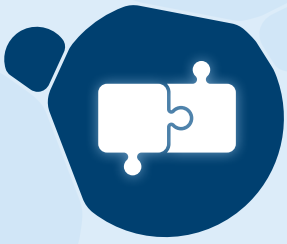


The power of **one**

This is where having one platform, and **one diagnostic application**, makes a difference. Bringing together the entire diagnostic workflow—from case management to collaboration and final report—in a single workspace **eliminates the extra time and effort involved in switching context**.

An integrated ecosystem transforms your primary application into a central hub, with third-party tools seamlessly extending its capabilities. This **enhances workflows without disrupting the user experience**.





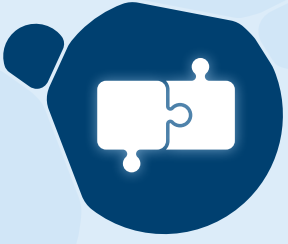
Bridging the gap: the **integrated** ecosystem

As a radiologist, you need access to diverse resources—from EMR information to advanced clinical tools—throughout your workflow. With an integrated solution, you will be equipped to provide high-quality care, supported by a cohesive, efficient workflow that leverages best-of-suite resources. This type of solution also blurs the line between native and third-party technologies, creating a unified experience where all essential tools and information are instantly accessible.

- » Comprehensive patient data access with auto-populated, context-synched EMR information.
- » Smooth transitions between native and third-party tools.
- » Deeply integrated specialized clinical apps that feel built-in.
- » Contextual navigation with smart links.
- » “One key for all doors” approach with single sign-on for streamlined, secure access.
- » Automated data flow populating structured reports.



Key
features



- » Less time spent switching between applications.
- » Improves data accuracy through systems that communicate.
- » Enhances diagnostic capabilities via specialized tools.
- » Faster access and greater utilization of patient information.
- » An intuitive and natural workflow.



Why it matters



The right case to the **right** radiologist

Worklists with dynamic capabilities—e.g. automatic find, filter, and focus—are the backbone of efficient workflows, acting as digital conductors that ensure optimal case distribution, and set the tone for the entire process.

- » Smart matching to present cases to radiologists based on expertise and subspecialty.
- » Visual indicators for immediate attention on critical cases: red means now, yellow means next in line, blue is standard, and green means go with the flow.
- » Fair distribution considering case complexity based on rules set up in the background, so that you will know what to do.
- » Instant insights into departmental efficiency, both for you and your manager.
- » Streamlined preparation to carry out and follow-up multi-disciplinary meetings (MDT), and facilitate faster decisions.
- » Incorporated artificial intelligence to improve triage, freeing up your time while increasing productivity.



Key
features



- » Improves diagnostic accuracy through skill-matched case assignment.
- » Prompts attention to critical cases, potentially saving lives.
- » Balances workloads to mitigate burnout and maintain quality.
- » Enhances collaboration on complex cases, combining radiology, pathology, and genomics and enriching MDT discussions.



Why it
matters



Navigating cases **efficiently**

Intuitive navigation is key to maintaining momentum: using keyboard shortcuts, minimizing mouse mileage, and allowing for just the right amount of customization. And we know that this is especially important given that interruptions can consume nearly half your time, impacting efficiency and report turnaround.

- » User-centric design to minimize clicks and maximize efficiency.
- » Contextual toolbars based on your current task or case, reducing clutter and cognitive load.
- » Customizable interfaces for a workspace arranged according to personal preferences, ordering the columns the way you want them, with or without icons.
- » Smooth movement between different stages of the diagnostic process, like automatically displaying the next, most important, case when you sign off the current one.
- » Quick access to your frequently used tools and recent cases, using the mouse and keyboard, or a keypad of your liking.
- » Easy task switching with the ability to save and resume work where you left off with a single shortcut.



Key
features



- » Improves the diagnostic experience through a tailored setup of keyboard, mouse, and shortcuts for your specialization.
- » Reduces cognitive load and decreases time spent on finalizing each case.
- » Makes it easy to get back on track with a complete viewing history, stored application states, and easy-to-access navigation options.
- » Situation-based navigation that streamlines the diagnostic workflow, ultimately shortening patients' pathways.



Why it matters



Optimized diagnostic viewing

Perfectly arranged images, just the way you like them with no manual adjustments needed. This isn't a radiologist's dream. It's the reality of customizable and smart display protocols. Such protocols are more than simple presets—they function as intelligent imaging assistants. They recognize the nuances of different study types and adapt to your preferences, allowing for immediate focus on diagnosis with minimal manual intervention.

- » Pre-defined protocols with a customization option to elevate your diagnostic experience.
- » Auto-arranged images for immediate interpretation.
- » Customer-owned protocols, enabling tweaks to be made without reaching out to your vendor every time.
- » Advanced customization for case presentation, adding settings like rotation, zoom, and more for your needs.
- » DICOM elements to classify the main characteristics that make up a series to govern how and where they are presented on the screen.
- » System-wide preferences tailored for a group of radiologists, or customizable for each individual.



Key features



- » Less time spent on manual image arrangement.
- » Consistent presentations across similar studies.
- » Focus on diagnosis, not display adjustments.
- » More efficient handling of high-volume studies.
- » Significant time saving.



Why it matters



Advanced diagnostic tools: **precision** at your fingertips

Modern diagnostic imaging complexity demands more than basic clinical tools, and you shouldn't have to juggle multiple workstations or manually insert measurements in the report. That's why a modern and future proof application includes both native and advanced diagnostic features designed to boost productivity, assist with tedious and repetitive tasks, and ensure precision.

- » Versatile multi-modality 3D and MPR rendering support with precise volume and distance measurements.
- » A variety of multi-planar reconstruction options, e.g. curved, and cross-curved with anatomical linking for convenient comparison across series.
- » Correlated findings across multimodality imaging types, with synchronized viewing and image alignment, independently.
- » Lesion management, with progress tracking, comparison, and presentations.
- » Automated measurements of stenosis grade and guided vessel analysis for consistent measurements across series.
- » Tools and quick access to advanced MSK measurements in 2D and 3D, with guides for accurate results while cutting measuring and reporting time.



Key
features



- » Enhances diagnostic accuracy through specialized tools.
- » Improves efficiency by eliminating application switching.
- » Greater confidence and speed in complex cases.
- » Reduces cognitive load through smoother workflows.



Why it matters



Collaborative workflows for **faster healthcare**

Radiology excellence extends far beyond a single screen, expert, or specialty. Today's healthcare landscape demands workflows that connect brilliant minds across departments, hospitals, and even continents. By transforming individual insights into shared wisdom, while having access to images and data, you'll be a part of enhancing patient care through collective expertise.

- » One enterprise imaging platform to store, secure, and share images and related data across specialties and experts.
- » MDT meeting worklists to organize and facilitate tumor boards and other diagnostic imaging-centered meetings.
- » Built-in peer review workflows for feedback with version tracking on reports, including instant messaging and screen sharing for real-time collaborative interpretation.



Key features



- » Helps to make MDT meetings more productive.
- » Makes it possible to get faster consultations and second opinions.
- » Enables continuous learning and quality improvement.
- » Increases and simplifies communication between departments and sites.
- » Improves patient care decisions through shared expertise.



Why it matters



Native, in-workflow reporting

Streamline structured data collection and accelerate your reporting. A cloud-based service enables you to create, implement and share structured reporting forms. Working with built-in logics and scripting support automates part of your reporting process, saving time and increasing precision.

- » Flexible input and navigation methods. Choose from voice, keyboard, or mouse inputs to effortlessly switch between viewing images and crafting your report.
- » Unique templates based on the study you're reporting allow you to auto-populate with measurements, patient info, and priors.
- » Streamlined, customized, reporting forms for fast, consistent, and correct reports which also allows you to share templates with colleagues or over enterprises.
- » Multi-ology support to simplify operations and reduce IT complexity.
- » Efficient feedback loop support, with built-in tools for peer review for resident training workflows.



Key features



- » Consistent experience across all tasks.
- » No more switching between applications.
- » Smooth data flow from one step to the next.
- » Fewer desktop synchronizations.
- » Unified evolution of all solution components.

Reporting isn't an afterthought.
It's an **integral part of the workflow**,
developed alongside every other element.



Why it
matters



Boost your intelligence with AI

AI in radiology has evolved from a future promise to a present reality. And with thoughtful integration, it can be a powerful ally in your toolkit, elevating the standard of care. The success and impact of AI is evident in all subspecialty of radiology. However, its success is dependent on efficient adoption and seamless integration that enhances, rather than disrupts, existing workflows. Always make sure that your AI applications are either FDA-cleared, Health Canada approved and/or CE-marked.

- » One-stop shop for applications, contracts, deployment, upgrades, and support for easy procurement and management.
- » Curated marketplace of validated AI from trusted vendors available through the web.
- » Multi-specialty support across radiology and cardiology, and testing the first use cases in pathology.
- » Seamless integration of AI into the existing diagnostic workspace, with results accessible within the same interface.
- » Operational, up-to-date, and secure applications available 24/7 through one SaaS.



Key features



- » Amplifies your abilities and can automate undesirable tasks.
- » Accelerates AI's potential positive impact through simplified adoption.
- » Enhances your existing workflows with seamless integration of AI results.
- » Delivered and operated by your trusted PACS vendor.
- » Allows you to experiment and keep improving with best-of-breed applications.



Why it
matters

Why not add **genomics** to the mix?

A modern enterprise imaging platform **combines radiology and digital pathology** while enabling clinical decisions in a single application. Now, with advancements within **genomics**, you could have a solution that achieves a new level **of precision medicine**.

This technological leap—with its unique integration between three crucial diagnostic specialties—gives physicians a fuller picture of patient status, **transforming both the workflow and the potential outcome**. In the future, it will help to make precise decisions and thereby provide targeted treatments, a major leap towards more advanced patient care.

RADIOLOGY
+ PATHOLOGY
+ GENOMICS

The power of SaaS

An important aspect of diagnostics within enterprise imaging is **having easy access to functionality and knowledge**, without compromising on **security** aspects. With a **true SaaS**, you can connect, validate and optimize your settings and access them from wherever you are, **without limits** on the number of concurrent users or the need for special workstations or network access. A **cloud service** offers you a system that is always up to date, with the latest functionalities and end-to-end encryption, **enabling remote work** as well as easier collaboration.



There you have **it.**

When you work in **an all-in-one diagnostic application**, you get a single interface that brings your worklist, viewer, clinical tools, and reporting together. You also get a solution where every component is **designed to work in harmony.**

Use this checklist to assess your next PACS solution and compare vendor offerings. While it doesn't cover all aspects, it highlights key areas and helps you get started.

	Key areas to consider	SECTRA	Vendor X
VENDOR	Awarded Best in KLAS	✓	?
	Business model designed for full transparency in pricing, contractual agreements, and liability	✓	?
	Certified Cloud security	✓	?
SOLUTION	One enterprise platform unifying all ologies	✓	?
	One application supporting all diagnostics	✓	?
	One universal viewer enabling enterprise-wide results	✓	?
	Integrated diagnostics with radiology, pathology and genomics	✓	?
PRODUCT	Dynamic worklists	✓	?
	Intuitive navigation	✓	?
	Optimized diagnostic toolset	✓	?
	Native, seamlessly integrated reporting solution	✓	?
	Built for collaboration - integrated residency training, MDT package and multiple-author workflows.	✓	?
	Advanced structured reporting package - supporting customer configurable, web-based reporting forms.	✓	?

SECTRA

Knowledge and passion

Sectra AB • info.medical@sectra.com • [medical.sectra.com](https://www.medical.sectra.com)

This is solely to be used for marketing purposes and may be changed at any time without prior notice. Sectra will not be held liable for any errors or misconceptions herein.

DOC-LAMI-DA29SR-1.0 © 2024 Sectra AB